

ACE SIMPLEX BASKET STRAINERS (Flanged ANSI 150 RF)

Models:

- **ANSI 150 Raised Face Flanged: ACE-BS-150**
 - o Cast Stainless Steel 316 (CF8M) body
 - o SS-304 Screen
- **ANSI 150 Raised Face Flanged: ACE-BC-150**
 - o Cast Carbon Steel (WCB) body
 - o SS-304 Screen

ACE-BS-150

Body: SS - ASTM A351 GR. CF8M - CLASS 150

WOG (Non-shock): 1900 KPa @ 37°C

Saturated Steam: 1035 KPa @ 185°C

Maximum Liquid: 135 KPa @ 535°C Short Term

ACE-BC-150

Body: CS - ASTM A216 GR. WCB - CLASS 150

WOG (Non-shock): 1900 KPa @ 37°C

Saturated Steam: 1035 KPa @ 185°C

Maximum Liquid: 550 KPa @ 425°C Short Term

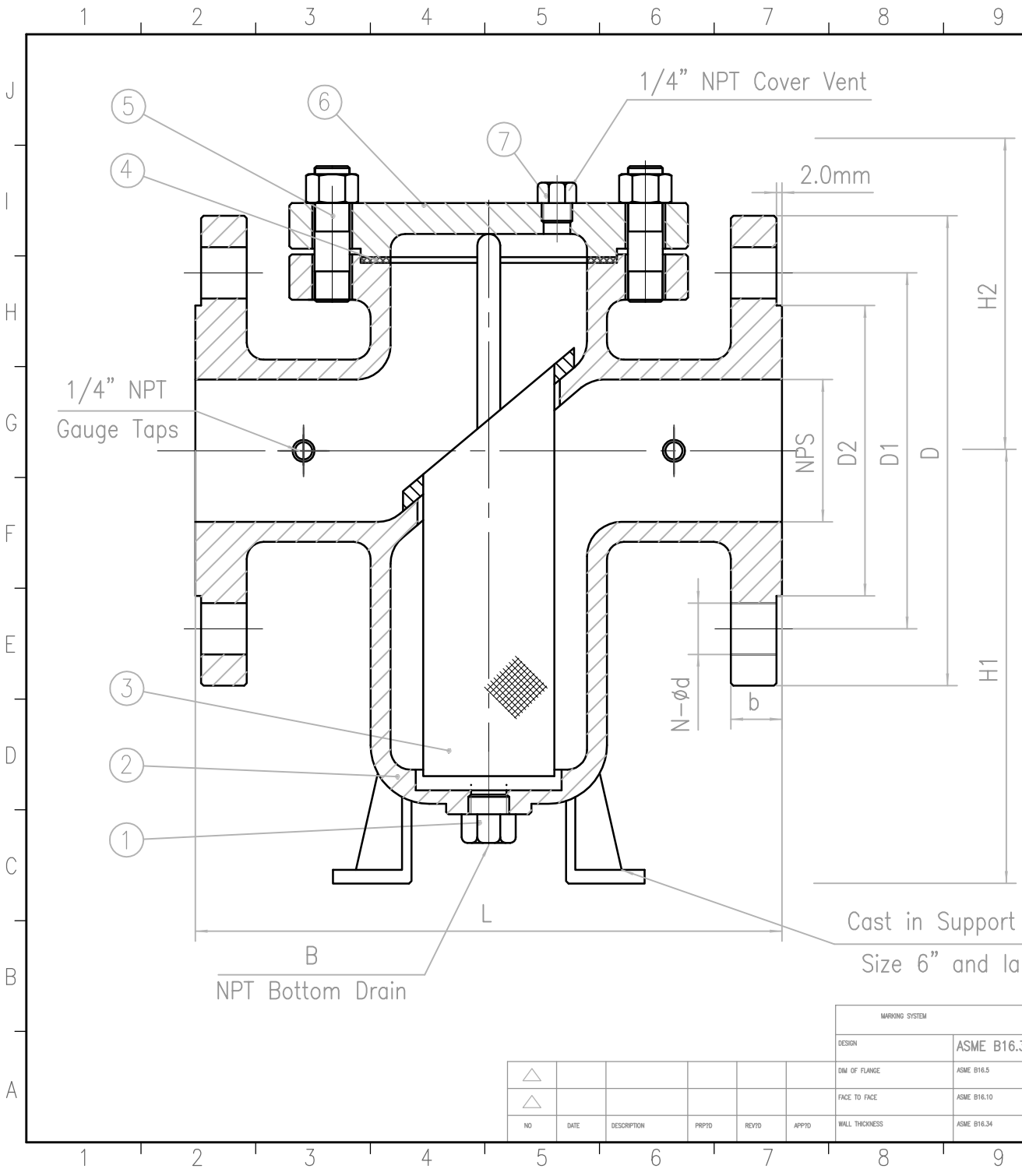
Efficient Design

- ACE BS-150 & BC-150 basket strainers are specially designed to include: inlet/outlet bosses with gauge taps (2" and up), spot- faced flange bolt holes, plugged bottom drain and cover vent, cast-in support legs (6" and up), epoxy painted carbon bodies, encapsulated cover gasket.
- Minimized Pressure Loss: pressure loss is minimized by providing a slanted straining element design and straight flow path. plugged, NPT taps are provided (near the inlet and outlet on both sides) allowing for the quick mounting of pressure gauges to monitor pressure loss.
- Higher Straining Capacity: with its large body and sizeable straining element, the ACE-BS/BC-150 has the ability to store large quantities of debris without affecting pressure loss - thus maximizing time between servicing.
- Modifiable Straining Elements: straining elements are available in a variety of perforations, meshes, and materials. special designs are also available including magnetic, wedge wire, drilled perforations, and pleated straining elements. the standard material for straining elements is SS-304 stainless steel.



Parts Detail

Part	ACE-BS-150	ACE-BC-150
Body	Stainless Steel 316 A351 Gr. CF8M	Carbon Steel A216 Gr. WCB
Cover	Stainless Steel A351 Gr. CF8M	Carbon Steel A216 Gr. WCB
Gasket	Spiral Wound Stainless Steel Asbestos free	
Internal Screen	Stainless Steel 304	
Screen Size	≤ 4": 1/16", 41% Open Area > 4": 1/8", 40% Open Area	
Stud	Stainless Steel 18-8 Series 300	Alloy Steel A193-B7
Nut	Stainless Steel 18-8 Series 300	Carbon Steel A194-2H
Plug	Stainless Steel	Carbon Steel
Paint	non	Epoxy
Code	ASME/ANSI B16.5	
Pressure Rating ANSI CLASS 150:		
WOG (Non-shock):	1900 KPa @ 37°C	1900 KPa @ 37°C
Saturated Steam:	1035 KPa @ 185°C	1035 KPa @ 185°C
Maximum Liquid:	135 KPa @ 535°C	550 KPa @ 425°C



No	Name	Material
1	Drain Plug	A193 B8M
2	Body	A351 CF8M
3	Filter Screen	SS304
4	Gasket	SPW SS316+Graphite
5	Closure Bolt	A193 B8M
6	Cover	A351 CF8M
7	Vent Plug	A193 B8M

2"	216	150	127	1/2"	1/16"	150	120.7	92.1	16.3	4-Ø19
2 1/2"	204	139	121	3/4"	1/16"	180	139.7	104.8	17.9	4-Ø19
3"	223	134	140	3/4"	1/16"	190	152.4	127	19.5	4-Ø19
4"	285	201	156	1"	1/16"	230	190.5	157.2	24.3	8-Ø19
6"	353	334	172	1 1/4"	1/8"	280	241.3	215.9	25.9	8-Ø22
NPS	L	H1	H2	B	Mesh size	D	D1	D2	b	N-Ød

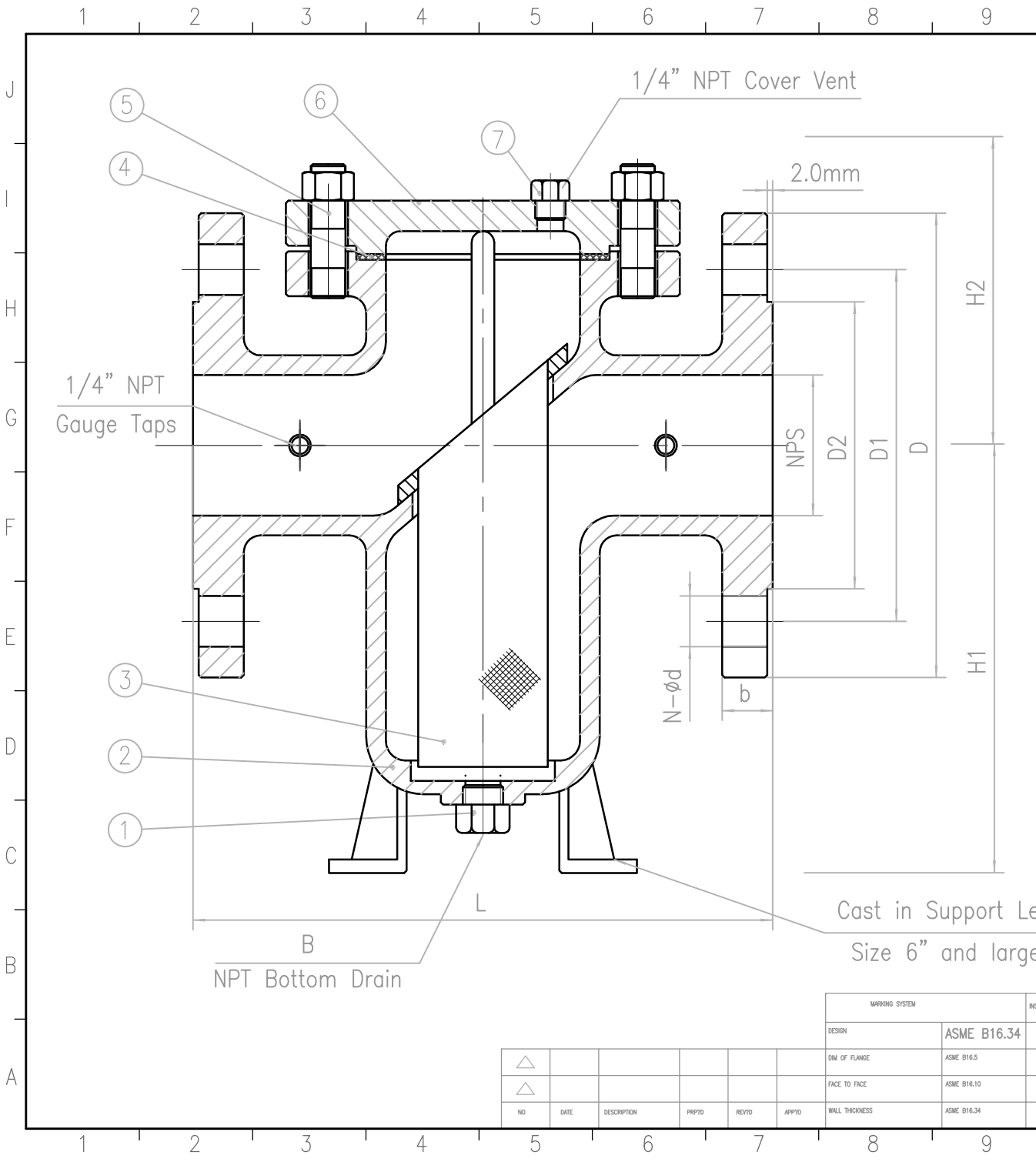
ACE-BS
XX
150
CF8M
8888

Cast in Support Legs
Size 6" and larger

ACEStrainer.com

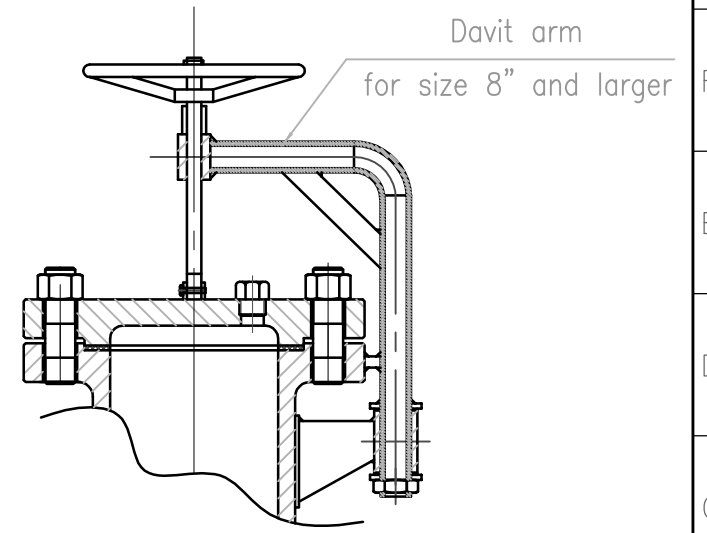
MARKING SYSTEM					INSPECTION ? TEST:			AP508	
DESIGN	ASME B16.34				SHEEL	3.0		MPa	
DIM OF FLANGE	ASME B16.5				BACK SEAL	/			
FACE TO FACE	ASME B16.10				SEAL	/			
WALL THICKNESS	ASME B16.34				AIR	/			
NO	DATE	DESCRIPTION	PRP'D	REV'D	APP'D				

TITLE:		CLASS 150LB		Basket Strainer		Page 2/5	
SIZE:	DESIGN	CHECK	DRAWING No	DATE	REV		



No	Name	Material
1	Drain Plug	A193 B8M
2	Body	A351 CF8M
3	Filter Screen	SS304
4	Gasket	SPW SS316+Graphite
5	Closure Bolt	A193 B8M
6	Cover	A351 CF8M
7	Vent Plug	A193 B8M

8"	442	416	226	1 1/2"	1/8"	345	298.5	269.9	29	8-Ø22
10"	559	464	274	1 1/2"	1/8"	405	362	323.8	30.6	12-Ø25
12"	667	476	350	2"	1/8"	485	431.8	381	32.2	12-Ø25
NPS	L	H1	H2	B	Mesh size	D	D1	D2	b	N-Ød



Cast in Support Legs
Size 6" and larger

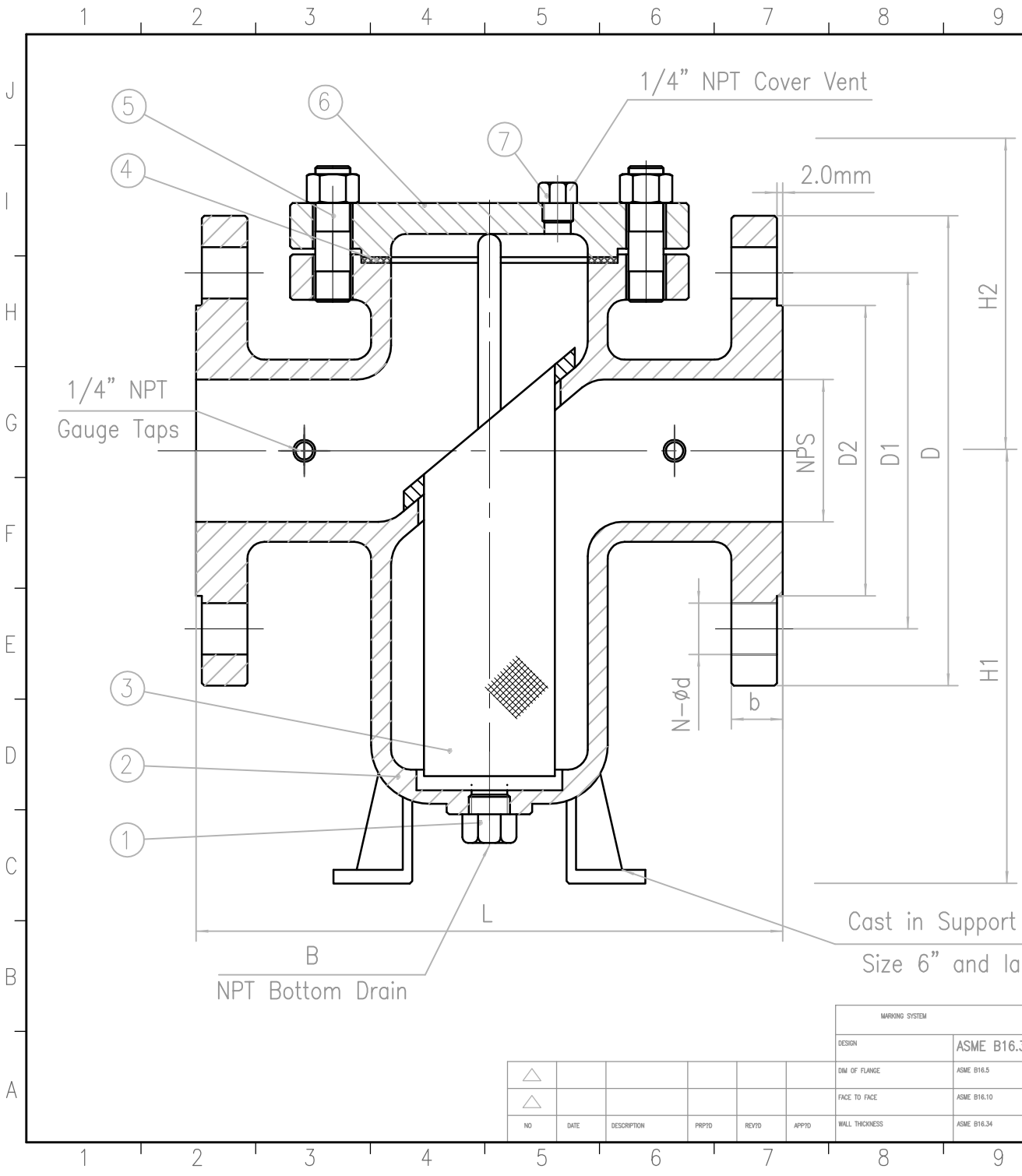
ACE Strainer.com

TITLE: CLASS 150LB Basket Strainer Page 3/5

SIZE:	DESIGN	CHECK	DRAWING No	DATE	REV

MARKING SYSTEM		INSPECTION ? TEST:		AP508	
DESIGN	ASME B16.34	SHEEL	3.0	MPa	
DIM OF FLANGE	ASME B16.5	BACK SEAL	/		
FACE TO FACE	ASME B16.10	SEAL	/		
WALL THICKNESS	ASME B16.34	AIR	/		

NO	DATE	DESCRIPTION	PRP'D	REV'D	APP'D
△					
△					



No	Name	Material
1	Drain Plug	A193 B7
2	Body	A216 WCB
3	Filter Screen	SS304
4	Gasket	SPW SS304+Graphite
5	Closure Bolt	A193 B7
6	Cover	A216 WCB
7	Vent Plug	A193 B7

2"	216	150	127	1/2"	1/16"	150	120.7	92.1	16.3	4-ø19
2 1/2"	204	139	121	3/4"	1/16"	180	139.7	104.8	17.9	4-ø19
3"	223	134	140	3/4"	1/16"	190	152.4	127	19.5	4-ø19
4"	285	201	156	1"	1/16"	230	190.5	157.2	24.3	8-ø19
6"	353	334	172	1 1/4"	1/8"	280	241.3	215.9	25.9	8-ø22
NPS	L	H1	H2	B	Mesh size	D	D1	D2	b	N-ød

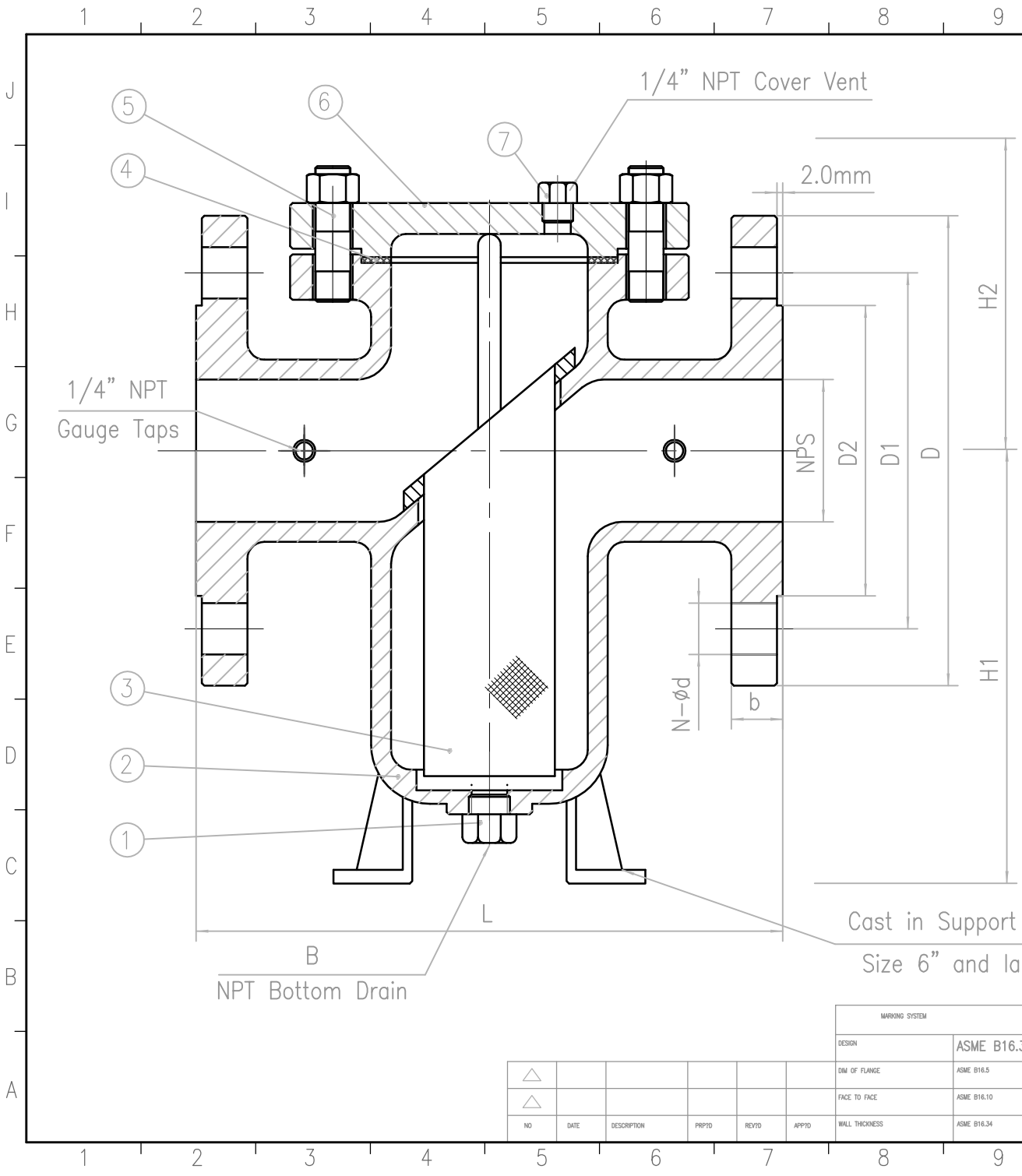
ACE-BC
XX
150
WCB
8888

Cast in Support Legs
Size 6" and larger

ACE Strainer.com

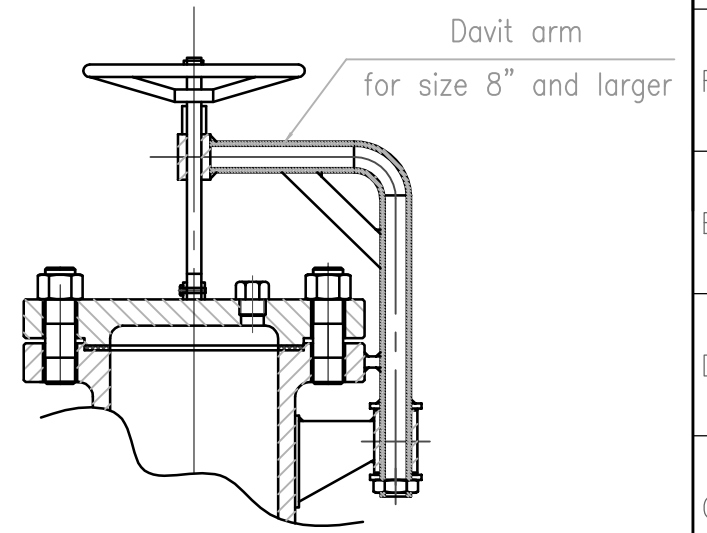
MARKING SYSTEM					INSPECTION ? TEST:			AP508	
DESIGN	ASME B16.34				SHEEL	3.0		MPa	
DIM OF FLANGE	ASME B16.5				BACK SEAL	/			
FACE TO FACE	ASME B16.10				SEAL	/			
WALL THICKNESS	ASME B16.34				AIR	/			
NO	DATE	DESCRIPTION	PRP'D	REV'D	APP'D				

TITLE:					
CLASS 150LB		Basket Strainer		Page 4/5	
SIZE:	DESIGN	CHECK	DRAWING No	DATE	REV



No	Name	Material
1	Drain Plug	A193 B7
2	Body	A216 WCB
3	Filter Screen	SS304
4	Gasket	SPW SS304+Graphite
5	Closure Bolt	A193 B7
6	Cover	A216 WCB
7	Vent Plug	A193 B7

8"	442	416	226	1 1/2"	1/8"	345	298.5	269.9	29	8-φ22
10"	559	464	274	1 1/2"	1/8"	405	362	323.8	30.6	12-φ25
12"	667	476	350	2"	1/8"	485	431.8	381	32.2	12-φ25
NPS	L	H1	H2	B	Mesh size	D	D1	D2	b	N-φd



Cast in Support Legs
Size 6" and larger

ACE Strainer.com

TITLE:		CLASS 150LB		Basket Strainer		Page 5/5	
SIZE:	DESIGN	CHECK	DRAWING No	DATE	REV		

MARKING SYSTEM		INSPECTION ? TEST:		APISOB	
DESIGN	ASME B16.34	SHEEL	3.0		
DIM OF FLANGE	ASME B16.5	BACK SEAL	/		
FACE TO FACE	ASME B16.10	SEAL	/		
WALL THICKNESS	ASME B16.34	AIR	/		

NO	DATE	DESCRIPTION	PRPYD	REYD	APPYD
△					
△					