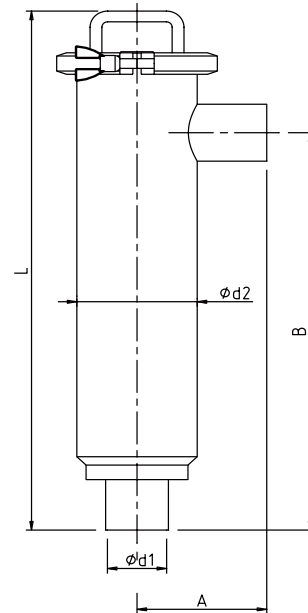
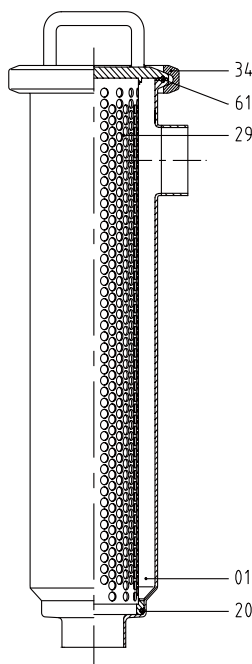


RIGHT ANGLE FILTER



WELDING / DIN WELDING					
DN	d1	d2	A	B	L
25	26	76.2	70	300	400
32	32		78		
40	38	101.6	100	370	485
50	50		110		
65	66	114.3	120	525	665
80	81		145		
100	100	154	155	675	825
125	125	219.1	175	912	1088
150	150				

WELDING / DIN WELDING										
DN	d1		d2		A		B		L	
	inch	mm	inch	mm	inch	mm	inch	mm	inch	mm
1"	0.87	22.1	3	76.2	2.56	65	11.81	300	15.75	400
1 ½"	1.37	34.8	4	101.6	3.35	85	14.57	370	19.09	485
2"	1.87	47.5			4.33	110				
2 ½"	2.37	60.2	4.5	114.3	5.31	135	20.67	525	26.19	665
3"	2.87	72.9			6.10	155				
4"	3.83	97.4	6.06	154	7.68	195	26.57	675	32.48	825
6"	5.78	146.8	8.63	219.1	8.66	220	36.22	920	43.31	1100



Position	Description	Material	Quantity
01	Body	AISI 316L	1
20*	O-ring seal	EPDM	1
29	Strainer screen	AISI 316L	1
34	Sealing clamp	AISI 316L	1
61*	Clamp seal	EPDM	1



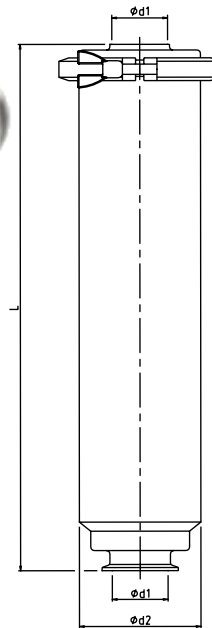
Purple Engineering

Australian Distributor

Phone: 1300 62 40 20
 Fax: +61-8-6323 0605
 Email: info@PRPL.com.au
 Skype: Purple.Engineering

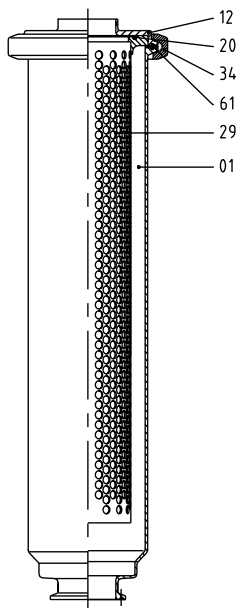
ACE Strainer.com

STRAIGHT FILTER



WELDING / DIN CLAMP			
DN	d1	d2	L
25	26	76.2	386
32	32		
40	38		
50	50	101.6	472
65	66		
80	81		
100	100	154	798
125	125	219.1	1032
150	150		

WELDING / OD CLAMP						
DN	d1		d2		L	
	inch	mm	inch	mm	inch	mm
1"	0.87	22.1	3	76.2	14.84	377
1 ½"	1.37	34.8	4	101.6	18.19	462
2"	1.87	47.5				
2 ½"	2.37	60.2	4.5	114.3	25.08	637
3"	2.87	72.9				
4"	3.83	97.4	6.06	154	30.87	784
5"	4.84	123	8.63	219.1	39.53	1004
6"	5.78	146.8				



Position	Description	Material	Quantity
01	Body	AISI 316L	1
12	Body cap	AISI 316L	1
20*	O-ring seal	EPDM	1
29	Strainer screen	AISI 316L	1
34	Sealing clamp	AISI 316L	1
61*	Clamp seal	EPDM	1



Purple Engineering

Australian Distributor

Phone: 1300 62 40 20
 Fax: +61-8-6323 0605
 Email: info@PRPL.com.au
 Skype: Purple.Engineering

ACE Strainer.com

DUPLEX FILTERS



Sanitary Duplex Strainers are custom made to size required

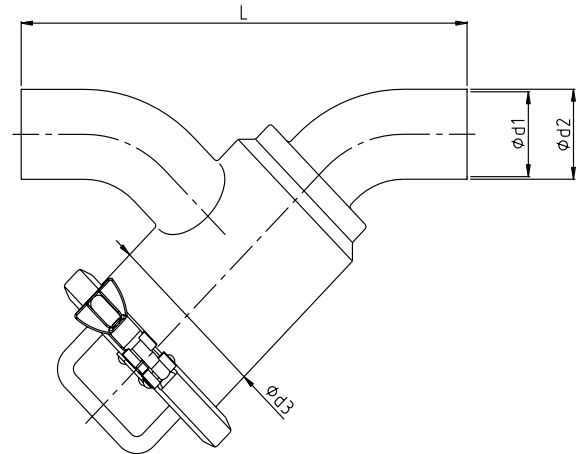


Purple Engineering

Australian Distributor

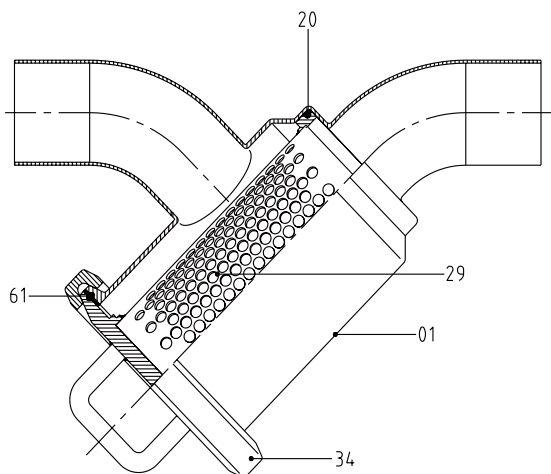
Phone: 1300 62 40 20
Fax: +61-8-6323 0605
Email: info@PRPL.com.au
Skype: Purple.Engineering

Y-FILTER



WELDING / DIN WELDING				
DN	d1	d2	d3	L
25	26	29	76.2	235
32	32	35		240
40	38	41	101.6	260
50	50	53		280
65	66	70	114.3	320
80	81	85		375
100	100	104	154	400
125	125	129	219.1	665
150	150	154		719

WELDING / OD WELDING								
DN	d1		d2		d3		L	
	inch	mm	inch	mm	inch	mm	inch	mm
1"	0.87	22.1	1	25.4	3.00	76.2	8.39	213
1 ½"	1.37	34.8	1.5	38.1	4.00	101.6	9.53	242
2"	1.87	47.5	2	50.8			11.81	300
2 ½"	2.37	60.2	2.5	63.5	4.50	114.3	13.70	348
3"	2.87	72.9	3	76.2			14.88	378
4"	3.83	97.4	4	101.6	6.06	154	18.43	468
6"	5.78	146.8	6	152.4	8.63	219.1	25.70	652.7

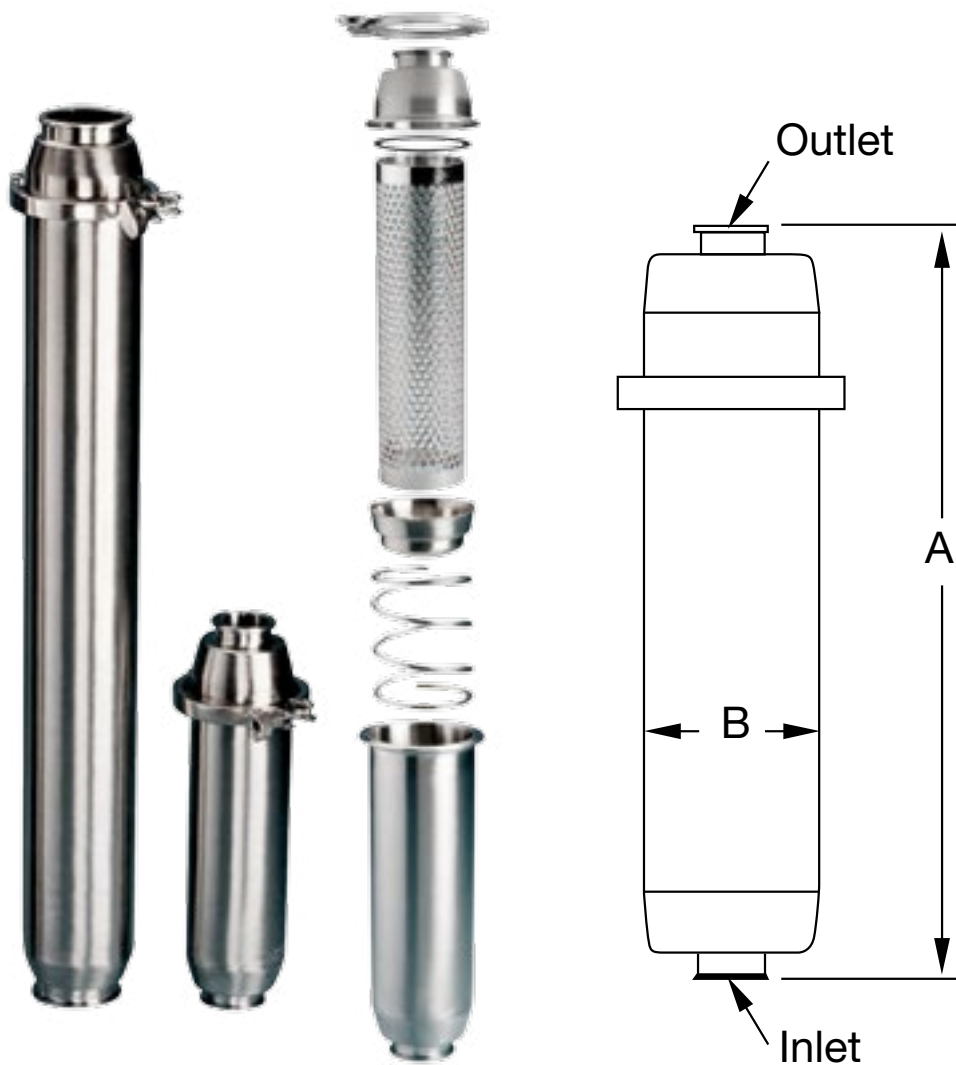


Position	Description	Material	Quantity
01	Body	AISI 316L	1
20*	O-ring seal	EPDM	1
29	Strainer screen	AISI 316L	1
34	Sealing clamp	AISI 316L	1
61*	Clamp seal	EPDM	1



ACE Strainer.com

INLINE SANITARY STRAINERS



	Line Size	Effective Filter Area (FT ²)	A		B	
			inch	mm	inch	mm
SHORT	1.0	0.65	0.62	15.75	0.16	4.0
	1.5	0.65	0.62	15.75	0.16	4.0
	2.0	0.65	0.62	15.75	0.16	4.0
	2.5	0.75	0.62	15.75	0.18	4.5
	3.0	0.75	0.62	15.75	0.18	4.5
	4.0	0.75	0.62	15.75	0.18	4.5
LONG	1.0	1.95	1.39	35.38	0.16	4.0
	1.5	1.95	1.39	35.38	0.16	4.0
	2.0	1.95	1.39	35.38	0.16	4.0
	2.5	2.25	1.39	35.38	0.18	4.5
	3.0	2.25	1.39	35.38	0.18	4.5
	4.0	2.25	1.39	35.38	0.18	4.5



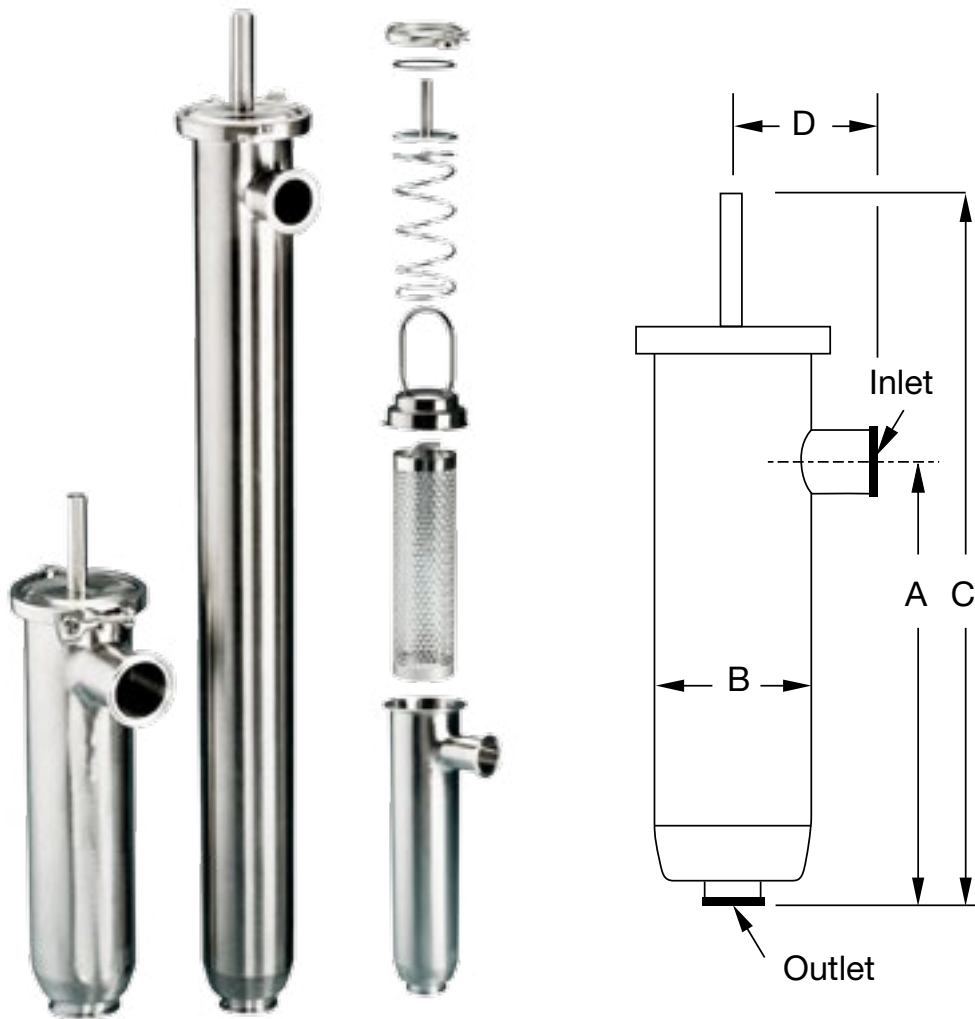
Purple Engineering

Australian Distributor

Phone: 1300 62 40 20
 Fax: +61-8-6323 0605
 Email: info@PRPL.com.au
 Skype: Purple.Engineering

ACE Strainer.com

SIDE INLET SANITARY STRAINERS



	Line Size	Effective Filter Area (FT ²)	A		B		C		D	
			inch	mm	inch	mm	inch	mm	inch	mm
SHORT	1.0	0.65	15.38	390.65	4.0	101.60	22.25	565.15	3.5	88.90
	1.5	0.65	15.38	390.65	4.0	101.60	22.25	565.15	3.5	88.90
	2.0	0.65	15.38	390.65	4.0	101.60	22.25	565.15	3.5	88.90
	2.5	0.75	15.38	390.65	4.5	114.30	22.25	565.15	5.0	127.00
	3.0	0.75	15.38	390.65	4.5	114.30	22.25	565.15	5.0	127.00
	4.0	0.75	15.38	390.65	4.5	114.30	22.25	565.15	5.0	127.00
LONG	1.0	1.95	35.00	889.00	4.0	101.60	41.88	1063.75	3.5	88.90
	1.5	1.95	35.00	889.00	4.0	101.60	41.88	1063.75	3.5	88.90
	2.0	1.95	35.00	889.00	4.0	101.60	41.88	1063.75	3.5	88.90
	2.5	2.25	35.00	889.00	4.5	114.30	41.88	1063.75	5.0	127.00
	3.0	2.25	35.00	889.00	4.5	114.30	41.88	1063.75	5.0	127.00
	4.0	2.25	35.00	889.00	4.5	114.30	41.88	1063.75	5.0	127.00



Purple Engineering

Australian Distributor

Phone: 1300 62 40 20
 Fax: +61-8-6323 0605
 Email: info@PRPL.com.au
 Skype: Purple.Engineering

ACE Strainer.com

TONGUE-STYLE STRAINER



Tri-clamp Fitting Size	Perf. Size	Face-to-Face Tee Dim. - "B"	Part #	
1.5"	1/8"	5.5"	740959	
1.5"	1/4"	5.5"	740964	
2.0"	1/8"	7.0"	740960	
2.0"	1/4"	7.0"	740965	
2.5"	1/8"	7.0"	740961	
2.5"	1/4"	7.0"	740966	
3.0"	1/8"	7.5"	740962	
3.0"	1/4"	7.5"	740967	
4.0"	1/8"	9.0"	740963	
4.0"	1/4"	9.0"	740968	
6.0"	1/8"	13.0"	110165	
6.0"	1/4"	13.0"	110166	

Tri-clamp Fitting Size	Insert Length* "A"	Face-to-Face Tee Dim. - "B"	Perf. Size	Part #	
1.5"	3.50"	5.5"	1/8"	740754	
1.5"	3.50"	5.5"	1/4"	740759	
2.0"	4.50"	7.0"	1/8"	740755	
2.0"	4.50"	7.0"	1/4"	740760	
2.5"	4.75"	7.0"	1/8"	740756	
2.5"	4.75"	7.0"	1/4"	740761	
3.0"	5.25"	7.5"	1/8"	740757	
3.0"	5.25"	7.5"	1/4"	740762	
4.0"	6.50"	9.0"	1/8"	740758	
4.0"	6.50"	9.0"	1/4"	740763	
6.0"	9.375"	13.0"	1/8"	740991	
6.0"	9.375"	13.0"	1/4"	741035	



Purple Engineering

Australian Distributor

Phone: 1300 62 40 20
 Fax: +61-8-6323 0605
 Email: info@PRPL.com.au
 Skype: Purple.Engineering