

ACE SIMPLEX BASKET STRAINERS (Flanged ANSI 150 RF)

Models:

- **ANSI 150 Raised Face Flanged: ACE-BS-150**
 - o Cast Stainless Steel 316 (CF8M) body
 - o SS-304 Screen
- **ANSI 150 Raised Face Flanged: ACE-BC-150**
 - o Cast Carbon Steel (WCB) body
 - o SS-304 Screen

ACE-BS-150

Body: SS - ASTM A351 GR. CF8M - CLASS 150

WOG (Non-shock): 1900 KPa @ 37°C

Saturated Steam: 1035 KPa @ 185°C

Maximum Liquid: 135 KPa @ 535°C Short Term

ACE-BC-150

Body: CS - ASTM A216 GR. WCB - CLASS 150

WOG (Non-shock): 1900 KPa @ 37°C

Saturated Steam: 1035 KPa @ 185°C

Maximum Liquid: 550 KPa @ 425°C Short Term

Efficient Design

- ACE BS-150 & BC-150 basket strainers are specially designed to include: inlet/outlet bosses with gauge taps (2" and up), spot- faced flange bolt holes, plugged bottom drain and cover vent, cast-in support legs (6" and up), epoxy painted carbon bodies, encapsulated cover gasket.
- Minimized Pressure Loss: pressure loss is minimized by providing a slanted straining element design and straight flow path. plugged, NPT taps are provided (near the inlet and outlet on both sides) allowing for the quick mounting of pressure gauges to monitor pressure loss.
- Higher Straining Capacity: with its large body and sizeable straining element, the ACE-BS/BC-150 has the ability to store large quantities of debris without affecting pressure loss - thus maximizing time between servicing.
- Modifiable Straining Elements: straining elements are available in a variety of perforations, meshes, and materials. special designs are also available including magnetic, wedge wire, drilled perforations, and pleated straining elements. the standard material for straining elements is SS-304 stainless steel.



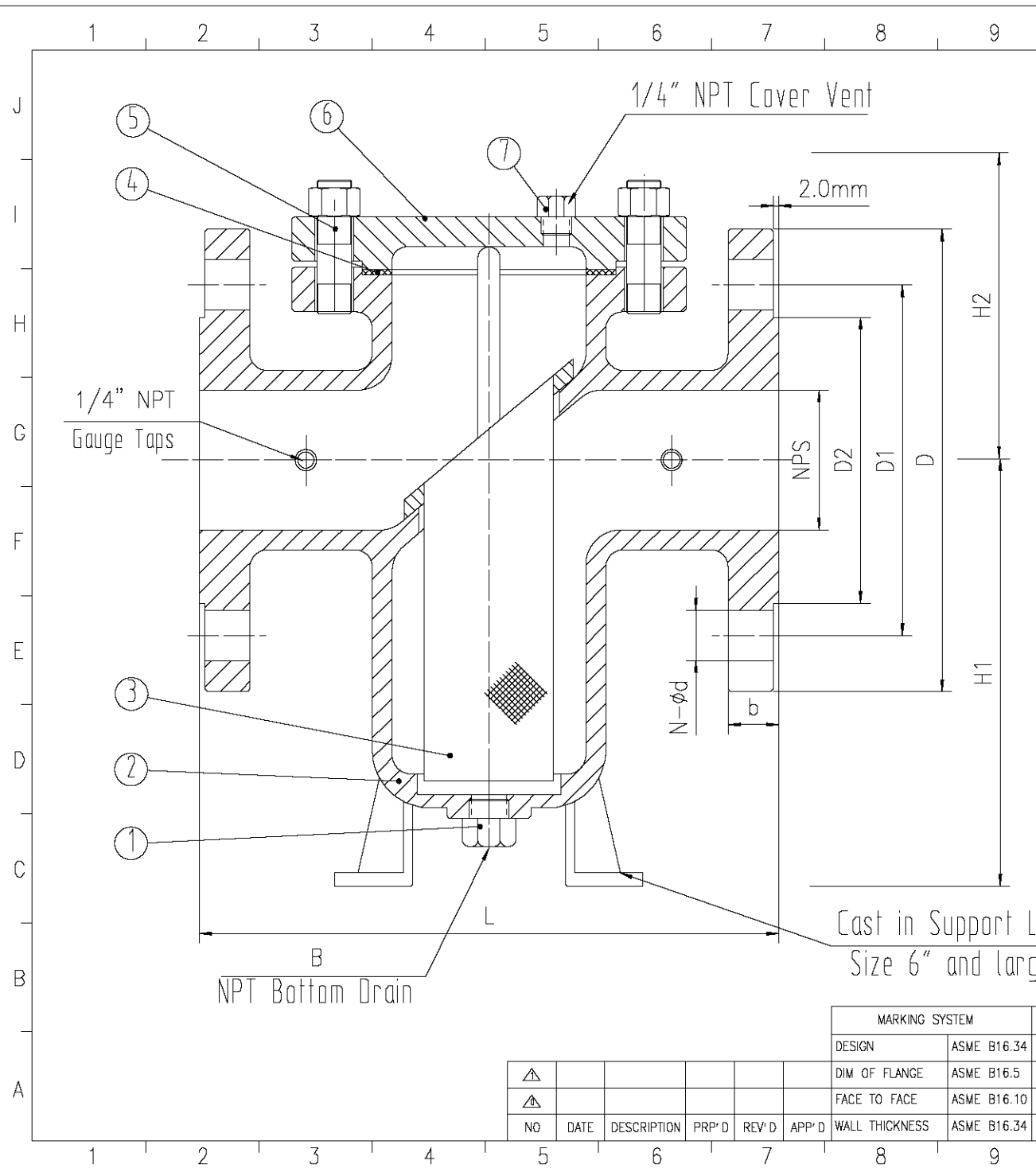
Parts Detail

| Part | ACE-BS-150 | ACE-BC-150 |
|--|---|---------------------------|
| Body | Stainless Steel 316 A351 Gr. CF8M | Carbon Steel A216 Gr. WCB |
| Cover | Stainless Steel A351 Gr. CF8M | Carbon Steel A216 Gr. WCB |
| Gasket | Spiral Wound Stainless Steel Asbestos free | |
| Internal Screen | Stainless Steel 304 | |
| Screen Size | ≤ 4": 1/16", 41% Open Area > 4": 1/8", 40% Open Area | |
| Stud | Stainless Steel 18-8 Series 300 | Alloy Steel A193-B7 |
| Nut | Stainless Steel 18-8 Series 300 | Carbon Steel A194-2H |
| Plug | Stainless Steel | Carbon Steel |
| Paint | non | Epoxy |
| Code | ASME/ANSI B16.5 | |
| Pressure Rating ANSI CLASS 150: | | |
| WOG (Non-shock): | 1900 KPa @ 37°C | 1900 KPa @ 37°C |
| Saturated Steam: | 1035 KPa @ 185°C | 1035 KPa @ 185°C |
| Maximum Liquid: | 135 KPa @ 535°C | 550 KPa @ 425°C |



Australian Distributor:

Phone: +61-1300 62 40 20
 Fax: +61-8-6323 0605
 Email: info@PRPL.com.au
 Skype: Purple.Engineering



| No | Name | Material |
|----|---------------|--------------------|
| 1 | Drain Plug | A193 B8M |
| 2 | Body | A351 CF8M |
| 3 | Filter Screen | SS304 |
| 4 | Gasket | SPW SS316+Graphite |
| 5 | Closure Bolt | A193 B8M |
| 6 | Cover | A351 CF8M |
| 7 | Vent Plug | A193 B8M |

| 2" | 2 1/2" | 3" | 4" | 6" | NPS | L | H1 | H2 | B | Mesh Size | D | D1 | D2 | b | N-φd |
|-------|--------|-------|-------|--------|-----|---|----|----|---|-----------|---|----|----|---|------|
| 216 | 204 | 223 | 285 | 353 | | | | | | | | | | | |
| 150 | 139 | 134 | 201 | 350 | | | | | | | | | | | |
| 127 | 121 | 140 | 156 | 210 | | | | | | | | | | | |
| 1/2" | 3/4" | 3/4" | 1" | 1 1/4" | | | | | | | | | | | |
| 1/16" | 1/16" | 1/16" | 1/16" | 1/8" | | | | | | | | | | | |
| 150 | 180 | 190 | 230 | 280 | | | | | | | | | | | |
| 120.7 | 139.7 | 152.4 | 190.5 | 241.3 | | | | | | | | | | | |
| 92.1 | 104.8 | 127 | 157.2 | 215.9 | | | | | | | | | | | |
| 16.3 | 17.9 | 19.5 | 24.3 | 25.9 | | | | | | | | | | | |
| 4-φ19 | 4-φ19 | 4-φ19 | 8-φ19 | 8-φ22 | | | | | | | | | | | |

ACE-BS
XX
150
CF8M
8888

ACEStrainer.com

| MARKING SYSTEM | | INSPECTION & TEST: | | API598 | |
|----------------|-------------|--------------------|-----|--------|--|
| DESIGN | ASME B16.34 | SHEEL | 3.0 | MPa | |
| DIM OF FLANGE | ASME B16.5 | BACK SEAL | / | | |
| FACE TO FACE | ASME B16.10 | SEAL | / | | |
| WALL THICKNESS | ASME B16.34 | AIR | / | | |

| TITLE: | | | | | |
|-------------|--------|-----------------|------------|------|-----|
| CLASS 150LB | | Basket Strainer | | | |
| SIZE: | DESIGN | CHECK | DRAWING No | DATE | REV |
| | | | | | |
| Rev 2024-1 | | | | | |

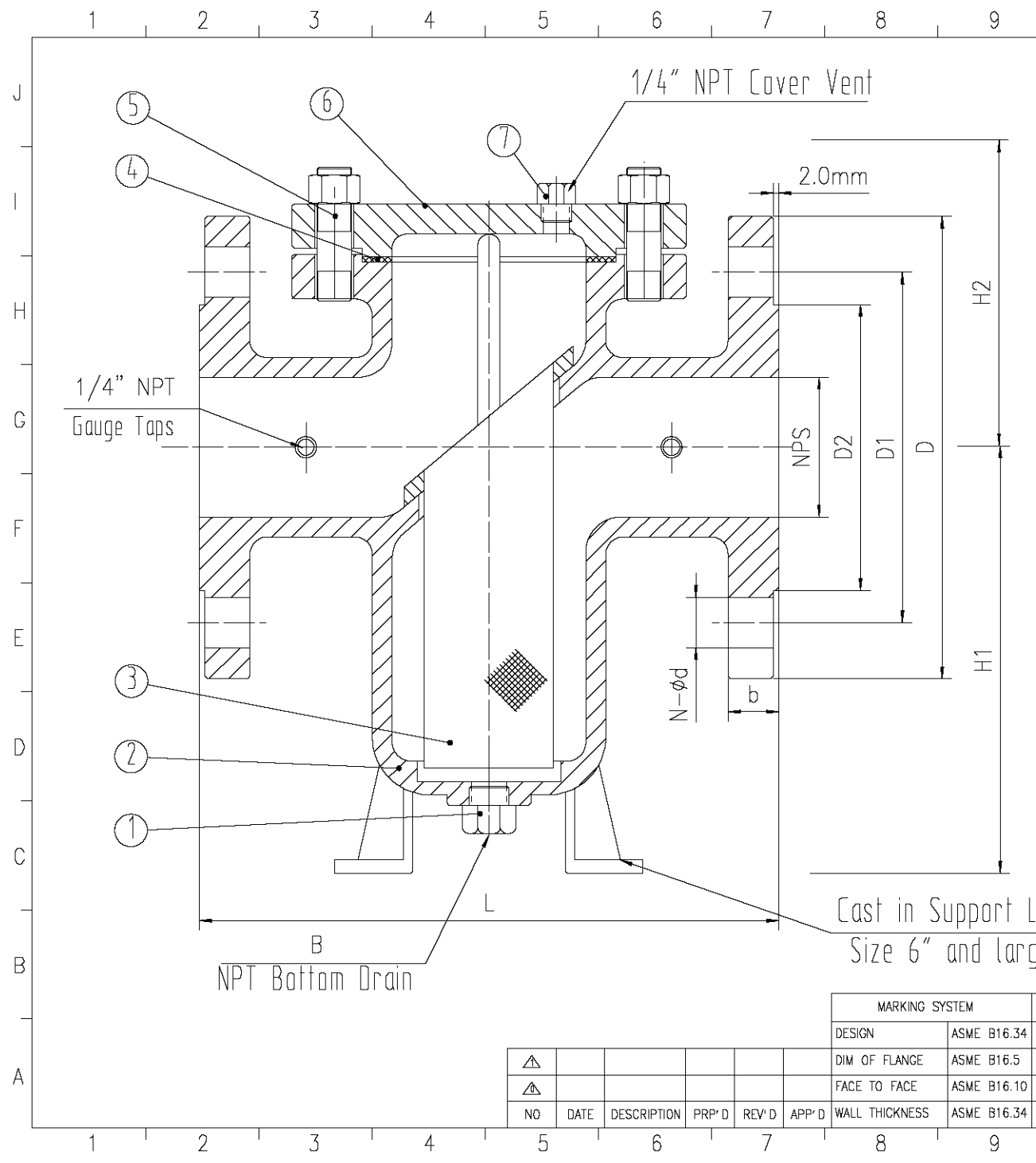
| NO | DATE | DESCRIPTION | PRP'D | REV'D | APP'D |
|----|------|-------------|-------|-------|-------|
| | | | | | |

Cast in Support Legs
Size 6" and larger

NPT Bottom Drain

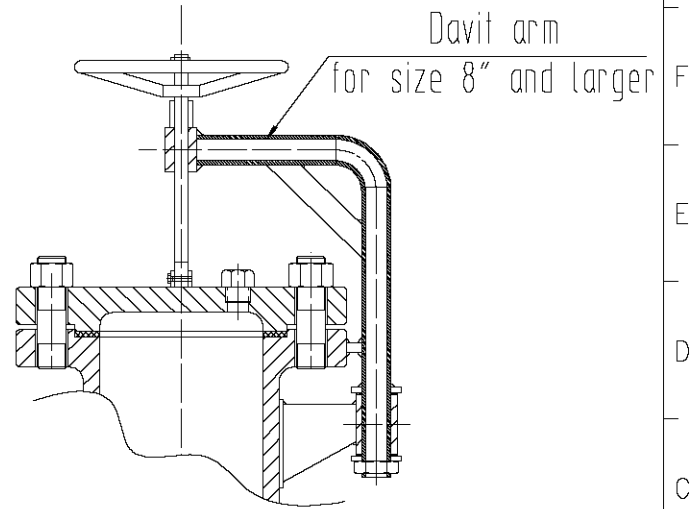
1/4" NPT
Gauge Taps

1/4" NPT Cover Vent



| No | Name | Material |
|----|---------------|--------------------|
| 1 | Drain Plug | A193 B8M |
| 2 | Body | A351 CF8M |
| 3 | Filter Screen | SS304 |
| 4 | Gasket | SPW SS316+Graphite |
| 5 | Closure Bolt | A193 B8M |
| 6 | Cover | A351 CF8M |
| 7 | Vent Plug | A193 B8M |

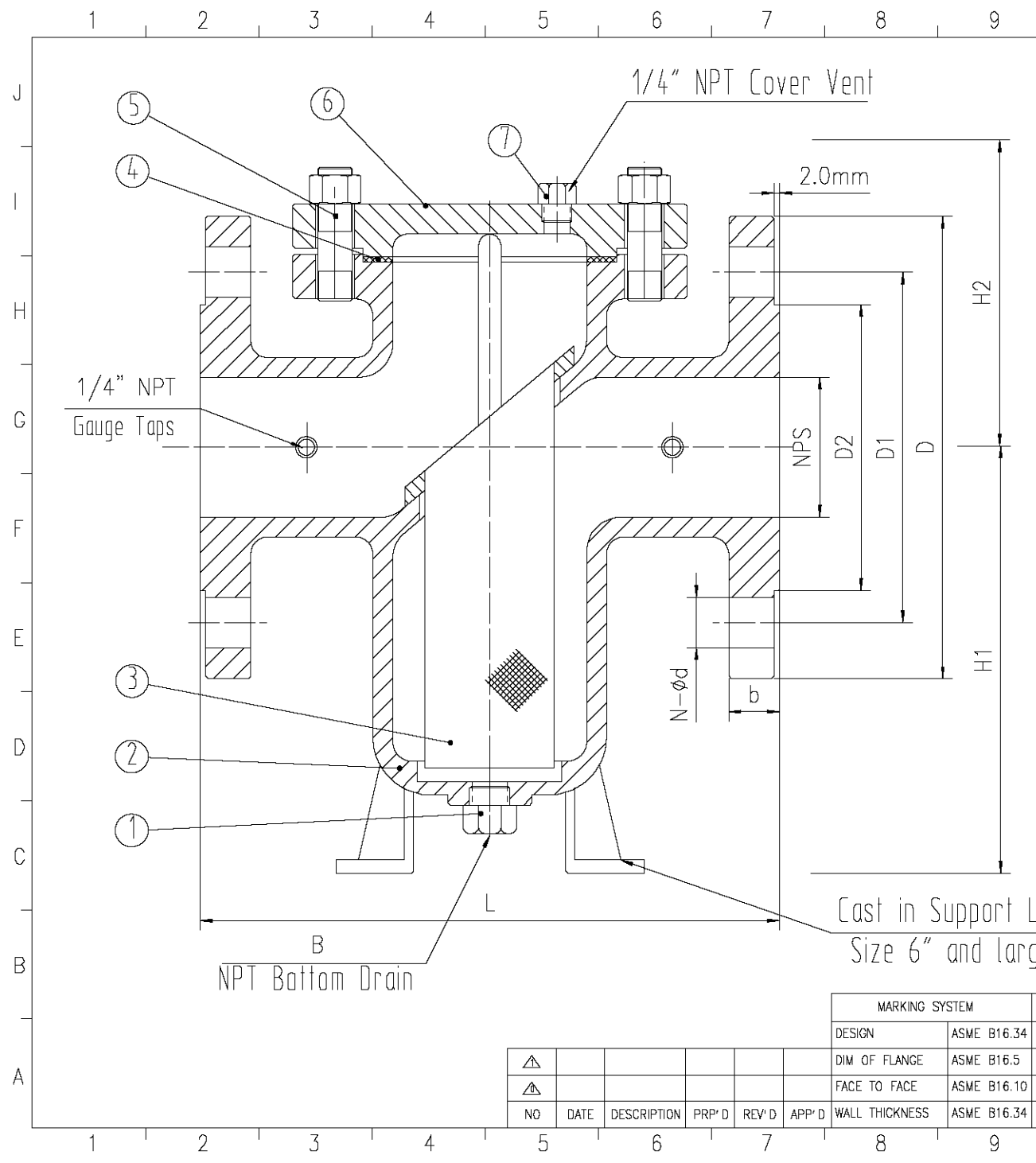
| | | | | | | | | | | |
|-----|-----|-----|-----|--------|-----------|-----|-------|-------|------|--------|
| 8" | 442 | 416 | 215 | 1 1/2" | 1/8" | 345 | 298.5 | 269.9 | 29 | 8-φ22 |
| 10" | 559 | 445 | 250 | 1 1/2" | 1/8" | 405 | 362 | 323.8 | 30.6 | 12-φ25 |
| 12" | 667 | 500 | 310 | 2" | 1/8" | 485 | 431.8 | 381 | 32.2 | 12-φ25 |
| NPS | L | H1 | H2 | B | Mesh Size | D | D1 | D2 | b | N-φd |



Cast in Support Legs
Size 6" and larger

ACE Strainer.com

| MARKING SYSTEM | | | | | | INSPECTION & TEST: | | API598 | | | |
|----------------|-------------|-------------|-------|-------|-------|------------------------------------|--------|--------|------------|------|-----|
| DESIGN | ASME B16.34 | SHEEL | 3.0 | | | MPa | | | | | |
| DIM OF FLANGE | ASME B16.5 | BACK SEAL | / | | | | | | | | |
| FACE TO FACE | ASME B16.10 | SEAL | / | | | | | | | | |
| WALL THICKNESS | ASME B16.34 | AIR | / | | | | | | | | |
| NO | DATE | DESCRIPTION | PRP'D | REV'D | APP'D | TITLE: CLASS 150LB Basket Strainer | | | | | |
| | | | | | | SIZE: | DESIGN | CHECK | DRAWING No | DATE | REV |
| | | | | | | Rev 2024-1 | | | | | |



| No | Name | Material |
|----|---------------|--------------------|
| 1 | Drain Plug | A193 B7 |
| 2 | Body | A216 WCB |
| 3 | Filter Screen | SS304 |
| 4 | Gasket | SPW SS304+Graphite |
| 5 | Closure Bolt | A193 B7 |
| 6 | Cover | A216 WCB |
| 7 | Vent Plug | A193 B7 |

| | | | | | | | | | | |
|--------|-----|-----|-----|--------|-----------|-----|-------|-------|------|-------|
| 2" | 216 | 150 | 127 | 1/2" | 1/16" | 150 | 120.7 | 92.1 | 16.3 | 4-φ19 |
| 2 1/2" | 204 | 139 | 121 | 3/4" | 1/16" | 180 | 139.7 | 104.8 | 17.9 | 4-φ19 |
| 3" | 223 | 134 | 140 | 3/4" | 1/16" | 190 | 152.4 | 127 | 19.5 | 4-φ19 |
| 4" | 285 | 201 | 156 | 1" | 1/16" | 230 | 190.5 | 157.2 | 24.3 | 8-φ19 |
| 6" | 353 | 350 | 210 | 1 1/4" | 1/8" | 280 | 241.3 | 215.9 | 25.9 | 8-φ22 |
| NPS | L | H1 | H2 | B | Mesh Size | D | D1 | D2 | b | N-φd |

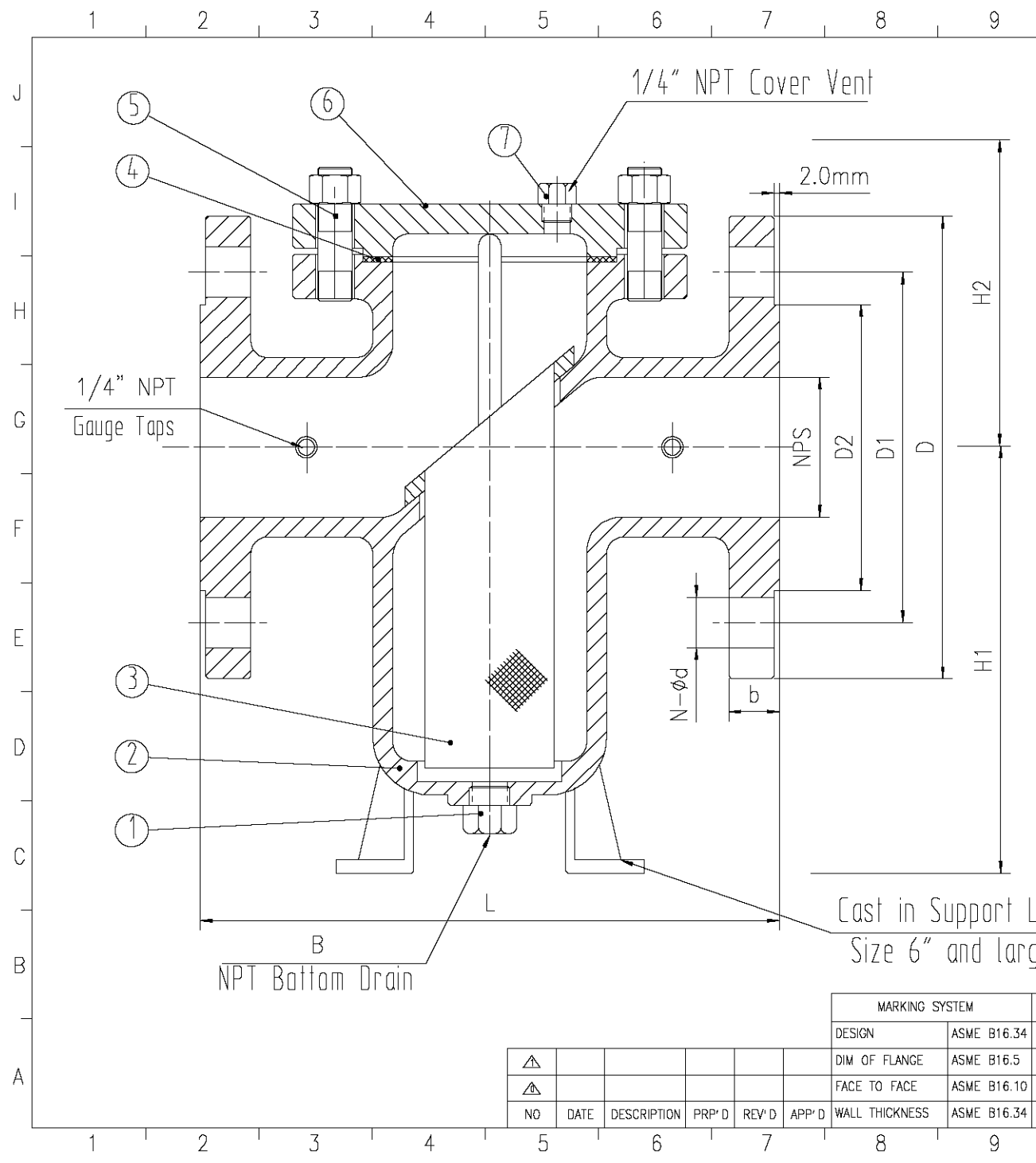
ACE-BC
XX
150
WCB
8888

ACE Strainer.com

| MARKING SYSTEM | | INSPECTION & TEST: | | API598 |
|----------------|-------------|--------------------|-----|--------|
| DESIGN | ASME B16.34 | SHEEL | 3.0 | MPa |
| DIM OF FLANGE | ASME B16.5 | BACK SEAL | / | |
| FACE TO FACE | ASME B16.10 | SEAL | / | |
| WALL THICKNESS | ASME B16.34 | AIR | / | |

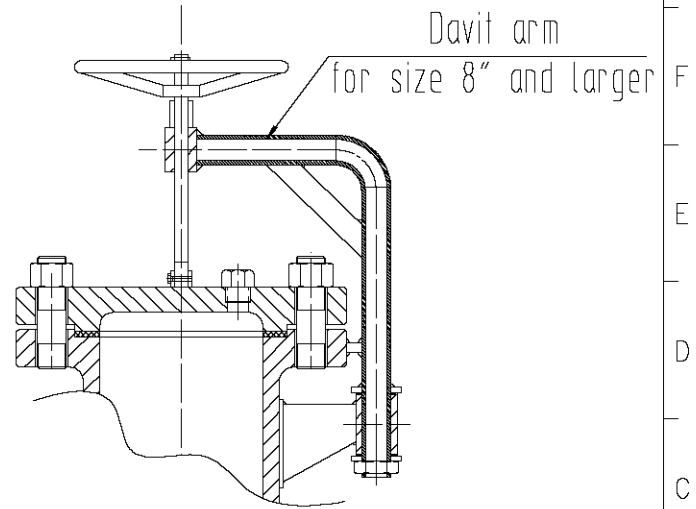
| NO | DATE | DESCRIPTION | PRP'D | REV'D | APP'D |
|----|------|-------------|-------|-------|-------|
| | | | | | |

| TITLE: CLASS 150LB Basket Strainer | | | | | |
|------------------------------------|--------|-------|------------|------|-----|
| SIZE: | DESIGN | CHECK | DRAWING No | DATE | REV |
| | | | | | |
| Rev 2024-1 | | | | | |



| No | Name | Material |
|----|---------------|--------------------|
| 1 | Drain Plug | A193 B7 |
| 2 | Body | A216 WCB |
| 3 | Filter Screen | SS304 |
| 4 | Gasket | SPW SS304+Graphite |
| 5 | Closure Bolt | A193 B7 |
| 6 | Cover | A216 WCB |
| 7 | Vent Plug | A193 B7 |

| 8" | 10" | 12" | NPS | L | H1 | H2 | B | Mesh Size | D | D1 | D2 | b | N-φd |
|-----|-----|-----|-----|---|----|----|---|-----------|--------|--------|-------|------|--------|
| 442 | 559 | 667 | | | | | | | 345 | 405 | 485 | 29 | 8-φ22 |
| 416 | 445 | 500 | | | | | | | 298.5 | 362 | 431.8 | 30.6 | 12-φ25 |
| 215 | 250 | 310 | | | | | | | 1 1/2" | 1 1/2" | 2" | 32.2 | 12-φ25 |
| | | | | | | | | | 1/8" | 1/8" | 1/8" | | |



Cast in Support Legs
Size 6" and larger

ACE Strainer.com

| MARKING SYSTEM | | | | | | INSPECTION & TEST: | | API598 | | | |
|----------------|-------------|-------------|-------|-------|-------|------------------------------------|--------|--------|------------|------|-----|
| DESIGN | ASME B16.34 | SHEEL | 3.0 | | | MPa | | | | | |
| DIM OF FLANGE | ASME B16.5 | BACK SEAL | / | | | | | | | | |
| FACE TO FACE | ASME B16.10 | SEAL | / | | | | | | | | |
| WALL THICKNESS | ASME B16.34 | AIR | / | | | | | | | | |
| NO | DATE | DESCRIPTION | PRP'D | REV'D | APP'D | | | | | | |
| | | | | | | TITLE: CLASS 150LB Basket Strainer | | | | | |
| | | | | | | SIZE: | DESIGN | CHECK | DRAWING No | DATE | REV |
| | | | | | | Rev 2024-1 | | | | | |