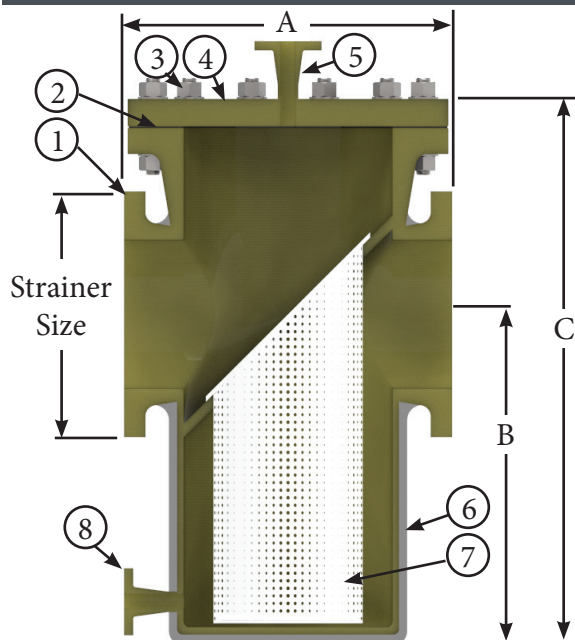


**MAX PRESSURE RATING: 150 PSI**

**MAX TEMP: 180-220 F**

**SERVICE FLUID: CORROSIVE**



The ACE Strainer SSP and SSH series is a non-metallic housing inline basket strainer, engineered for corrosive industrial systems.

Wetted housing surfaces are comprised of Fiberglass Reinforced Plastic (FRP) containing High Quality Vinyl Ester Resin D411 (SSP) and D470 (SSH). This composite construction offers high corrosion resistance along with the structural integrity to last a project lifespan of 20-30 years.

The SSH series uses D470 resin that generally has a higher temperature rating than the SSP series. See the chemical compatibility table on page 4 for the max temperature for each series.



*SSH Strainer*



*SSP Strainer*

Three different lid fasteners are available and described on page 3.

Contact ACE if custom configurations or dimensions are required.

Item	Part	Material
1	Flange	FRP
2	Gasket	EPDM STANDARD
3	Fastener	SS316 STANDARD
4	Cover	FRP D411/D470
5	Vent	FRP D411/D470
6	Body	FRP D411/D470
7	Basket	1/8" Perf PVDF
8	Drain	FRP

The standard strainer basket is PVDF- 1/8" perforations, and many options exist for clients requiring a different filtration level or material of construction. See page 2 for options.



SSP PN	SSH PN	Strainer Size	Face to Face (inch) A	Center Line (inch) B	Height (inch) C	Weight (lbs)	Basket Area / Inlet Area
SSP184002031	SSH184002031	2	11	10 1/2	18 1/8	33	18.8
SSP184003031	SSH184003031	3	11	10 1/2	18 1/8	34	15.6
SSP184004031	SSH184004031	4	14 3/4	11 5/8	20 1/4	39	17.1
SSP184005031	SSH184005031	5	17	16	25	55	18.0
SSP184006031	SSH184006031	6	18	16	26 1/2	57	12.6
SSP184008031	SSH184008031	8	20	21 1/2	34 1/2	82	11.3
SSP184010031	SSH184010031	10	22	23	37 1/2	108	10.2
SSP184012031	SSH184012031	12	27 1/2	31 5/8	46 3/4	185	10.1
SSP184014031	SSH184014031	14	35	32 1/2	49	220	13.0
SSP184016031	SSH184016031	16	37	37	60	260	11.1
SSP184018031	SSH184018031	18	38	39	63 1/2	300	9.9
SSP184020031	SSH184020031	20	46	40	65 1/4	330	9.9
SSP184024031	SSH184024031	24	47	42	69 1/2	330	9.9



Purple Engineering

[www.ACEstrainer.com](http://www.ACEstrainer.com)

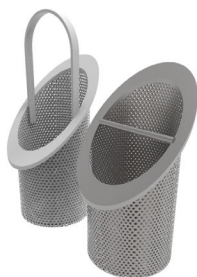
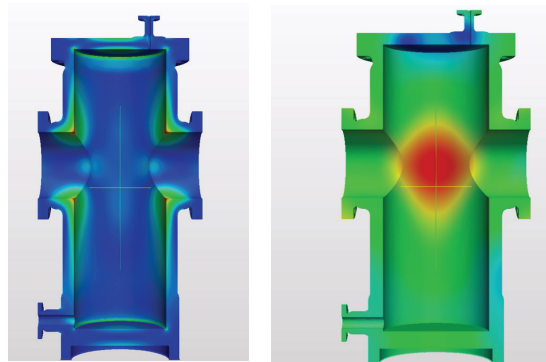
Australian Distributor

Phone: 1300 62 40 20  
 Fax: +61-8-6323 0605  
 Email: [info@PRPL.com.au](mailto:info@PRPL.com.au)  
 Skype: Purple.Engineering



	Chemical Resistance	Temperature	Pressure Rating	ASME SEC X Compliance	Skirt	PE Stamped Drawings	FEA Stress Analysis	FEA Deflection Analysis	Pressure Drop Calculation	CMTRS	3D CAD for Plant Design	Custom Nozzle Load Calc
SSP	Best	Great	150 psi	Good	Add'l	Add'l	Add'l	Add'l	Incl.	Add'l	Add'l	Possible
SSH	Best	Best	150 psi	Good	Add'l	Add'l	Add'l	Add'l	Incl.	Add'l	Add'l	Possible
SSX	Best	Best	150 psi	Best	Incl.	Incl.	Incl.	Incl.	Incl.	Incl.	Incl.	Easy

ACE Strainer has professional engineering capabilities to meet your technical needs and can create custom designs including FEA and CFD analysis. The table above lays out what is readily available for each series. The SSX line of strainers are similar to the SSH/SSP and already have most of the technical documents prepared for demanding projects. Contact our global distributors to help determine which product will be your best value.



## Baskets

Select your basket by first determining the opening size. Next determine the material most suitable for your fluid. SS316 has the best availability. AL6XN is great for salt water. Hastelloy C276 and Monel are suitable for many fluids and a good option when mesh liners are required. PVC fairs well up to 140 deg F, PP and CPVC 180 deg F, and PVDF 250 deg F.

Perf /Mesh	Opening (micron)	Effective Open Area	PVC	CPVC	PVDF	PP	SS316	AL6XN	Hastelloy C276 / Monel
1/4" Perf	6350	40%	\$	\$	\$	\$	\$	\$\$	\$\$\$
3/16" Perf	4762	51%					\$		
5/32" Perf	3968	63%					\$		
1/8" Perf	3175	40%	\$	\$	\$	\$	\$		\$\$\$
20 mesh	841	21%	ETFE mesh liner is available for mesh sizes 20,40 and 60				\$\$		\$\$\$\$
40 mesh	400	20%					\$\$		\$\$\$\$
60 mesh	250	15%					\$\$		\$\$\$\$
80 mesh	177	17%					\$\$		\$\$\$\$
100 mesh	149	19%	PVDF mesh liner available				\$\$\$		

Other options available, Open area for mesh is estimate



[www.ACEstrainer.com](http://www.ACEstrainer.com)



Purple Engineering

Australian Distributor

Phone: 1300 62 40 20  
 Fax: +61-8-6323 0605  
 Email: info@PRPL.com.au  
 Skype: Purple.Engineering



Operators prefer basket strainers because they are easier to clean. The fasteners impact how much effort is required to clean the strainer. Below are some options to help optimize the strainer for your operation.



### T-Handle

Limited to 50 psi  
Fastest basket change

ACE Strainer's SS316 T-Handle/Swing Latch Assembly is the highest quality, most durable easy-off strainer lid hardware system made for any non-metallic strainer. All components of this assembly are machined from solid stock. Threaded sections are 3/8-16 and quantity of fasteners supplied vary upon strainer housing size. Standard design pressure rating for strainers with this lid fastener type is 50 psi.



Can't Decide?  
Call Our  
Distributors  
for Support



### Swing Bolt

Limited to 100 psi  
Faster basket change

Swing Bolt fasteners have a slotted body flange and slotted cover. The slots and swing bracket allows operators to quickly loosen bolts and swing bolts away. The washer and nut stay attached and avoids having to bend over to pick up dropped hardware. The swing bolts diameter corresponds to the ANSI Flange, which allows for a higher pressure than the T-handles. There will be SS316 brackets on the housing- so it is not the best choice for very corrosive environments.



### Traditional Bolts

150 psi  
Most Corrosive Resistant

Traditional bolting uses an ANSI B16.5 Class 150 Blind Flange, and standard bolts. The FRP lids are much lighter than their metallic counterparts. Traditional bolting material options include SS304, SS316, and PTFE Coated Carbon Steel. This is a good choice for corrosive external (atmospheric) environments- or high pressure applications. Fasteners are completely replaceable.



[www.ACEstrainer.com](http://www.ACEstrainer.com)



Purple Engineering

Australian Distributor

Phone: 1300 62 40 20  
Fax: +61-8-6323 0605  
Email: [info@PRPL.com.au](mailto:info@PRPL.com.au)  
Skype: Purple.Engineering



Generally SSP and SSH strainers have a max temperature of 180 to 220 deg F. Below is a table of the max temperature of the resin liner for several fluids. Please let Fluidrol know the service fluid, especially if you are near the limits. Our engineer can answer questions about compatibility or a fluid not listed. Gaskets, baskets, and fasteners should also be considered for fluid compatibility.

Chemical Compatibility	Max Temp F	
Service Fluid	SSP	SSH
Water, Sea, Desalination	180	180
Acetic Acid 50%	180	180
Aluminum Chloride	210	250
Aluminum Hydroxide 100%	180	200
Aluminum Potassium Sulfate	210	250
Ammonium Bifluoride	150	150
Aniline Hydrochloride	180	180
Aluminum Sulfate	210	250
Benzoic Acid	210	210
Black Liquor	180	180
Black Liquor Recovery	325	400
Blow Down	250	250
Brass Plating Solution	180	180
Bromine (satd)	NR	180
Brown Stock	200	180
Butyl Benzyl Phthalate	180	210
Butyric Acid (50%)	210	210
Calcium Sulfate Slurry	210	210
Chloric Acid	80	80
Chlorinated Pulp	180	200
Chlorine Dioxide (Bleaching Solution)	180	200
Dodecyl Benzene Sulfonic Acid	180	210
Ethyl Sulfate	100	100
Ferric Chloride	210	210
Ferric Chloride (>0.5%)	210	210

Chemical Compatibility	Max Temp F	
Service Fluid	SSP	SSH
Ferrous Chloride	210	210
Formic Acid (10%)	180	180
HCl (8-10%)	180	210
Hydrobromic Acid (25%)	180	180
Hydrochloric Acid (20%)	180	230
Hydrofluoric Acid (10%)	150	150
Hydrogen Sulfide, aqueous	210	210
Iodine	150	150
Magnesium Chloride	210	250
Mercuric Chloride	210	210
Myristic Acid	210	250
Nickel Chloride	210	210
Nickel Plating Solution	180	180
Nitric Acid (5%)	150	180
Phosphoric Acid	210	210
Silver Plating Solution	180	150
Sodium Bisulfate	210	210
Sodium Fluoride	180	180
Sodium Hypochlorite (18%)	150	NR
Stannic Chloride	210	210
Stearic Acid	210	210
Sulfamic Acid (15%)	180	180
Sulfite/Sulfate Liquors (Pulp Mill)	200	200
Sulfuric Acid (70%)	180	180
Trichloroacetic Acid (85%)	80	120



[www.ACEstrainer.com](http://www.ACEstrainer.com)



Purple Engineering

Australian Distributor

Phone: 1300 62 40 20  
 Fax: +61-8-6323 0605  
 Email: [info@PRPL.com.au](mailto:info@PRPL.com.au)  
 Skype: Purple.Engineering

